



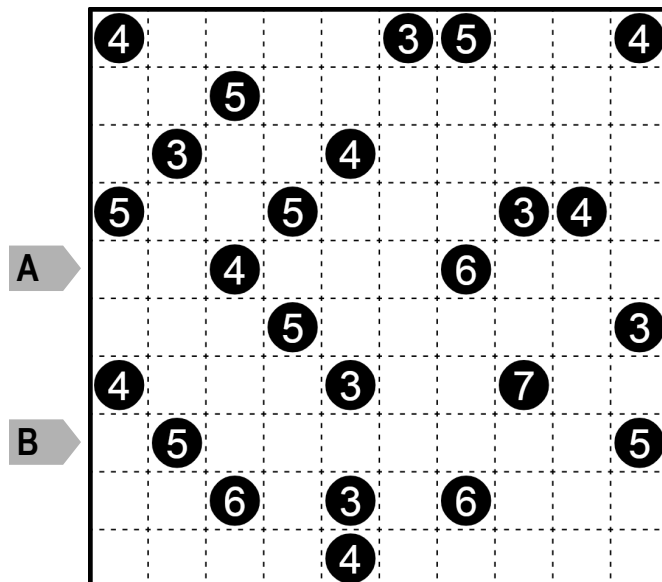
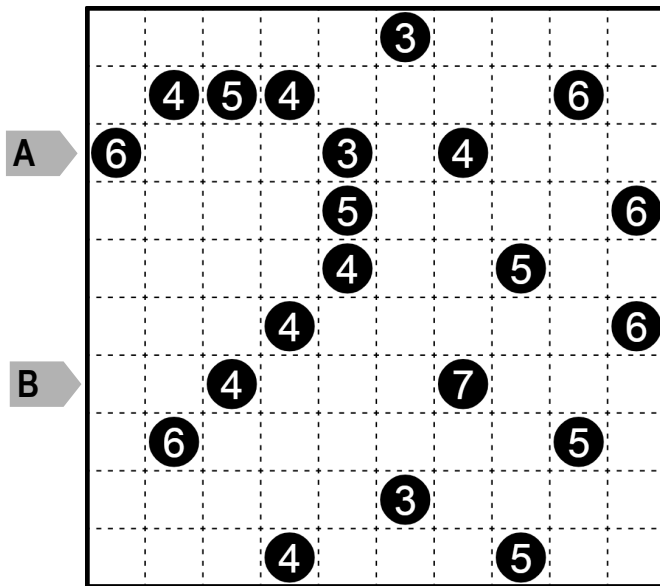
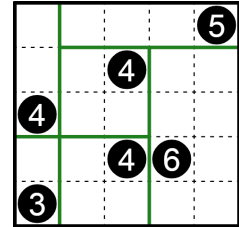
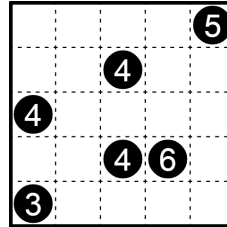
22 + 36 points

Wk 3 (S1) - 12 JUN 2020

Recto

Recto

Divide the grid into rectangles (including squares) so that each region contains one number. The number will represent the sum of the length and the height of that region. Regions may not overlap and all cells must be used.



Answer Keys

For each row, enter the size of each contiguous horizontal segments of the regions. The third row of the example would be 122.

